

Prima BioMed

Initial LAG-3 combo data presented

Initial TACTI-mel data

Prima BioMed has presented encouraging early signs of efficacy from the TACTI-mel trial of IMP321 in combination with Keytruda, with one of the six melanoma patients in the first (1mg/kg) cohort experiencing a complete response. Recruitment in the second cohort is complete and the final cohort is expected to be fully recruited by Q317. Preliminary efficacy data from the 15-patient, run-in phase of the AIPAC breast cancer study are expected mid-year (recruitment in the 226-patient Phase IIb component is ongoing). Our valuation is unchanged at A\$252m (12c per share).

Year end	Revenue (A\$m)	PBT* (A\$m)	EPS* (c)	DPS* (c)	P/E (x)	Yield (%)
06/15	1.3	(12.9)	(0.9)	0.0	N/A	N/A
06/16	1.9	(13.7)	(0.6)	0.0	N/A	N/A
06/17e	1.3	(12.7)	(0.6)	0.0	N/A	N/A
06/18e	10.6	(4.0)	(0.2)	0.0	N/A	N/A

Note: *PBT and EPS are normalised, excluding amortisation of acquired intangibles, exceptional items and share-based payments.

A complete response in low-dose TACTI-mel cohort

The TACTI-mel trial is using IMP321 (Prima's LAG-3-based antigen presenting cell activator) to enhance efficacy in melanoma patients who have had a suboptimal initial response to the PD1 immune checkpoint inhibitor Keytruda. A presentation to the Immune Checkpoint Inhibitors conference in Boston showed that that one of the six patients (17%) in the first cohort experienced a complete response (CR). Even though there is only one patient with a CR, the initial CR rate compares favourably with rates of 2-6% seen in Merck's Phase III trials of Keytruda monotherapy in melanoma. The combination has been well tolerated so far. Recruitment in the third and highest (30mg) dose cohort is expected to complete in Q317, so we expect efficacy data from the final cohort in H118.

Initial efficacy data from AIPAC run-in due mid-year

Initial efficacy data are expected mid-2017 (possibly at ASCO in June) from the 15 metastatic breast cancer patients treated with IMP321 in combination with paclitaxel during the safety run-in phase of the AIPAC study (the response rate in a previous Phase I study was 50%). Dosing began in January in the 226-patient randomised Phase IIb component of AIPAC; top-line PFS data could mature sometime between late 2018 and mid-2019. Patients will receive either 30mg of IMP321 or placebo, in combination with paclitaxel.

Valuation: Unchanged at A\$252m, 12c per share

Our valuation is unchanged at A\$252m, which is equal to 12c per share on an undiluted basis or 8c per share after accounting for dilution from options, warrants and convertible notes. Guidance is that the cash balance of A\$16.6m at 31 December will be sufficient to fund operations through Q1 CY18, excluding any milestone payments from partners Novartis and GSK. Milestone revenue (we model ~A\$9m in FY18) would extend the cash runway.

Pharma & biotech

22 March 2017

Price **A\$0.033**

Market cap **A\$69m**

US\$0.76/A\$

Gross cash (A\$m) at 31 December 2016 16.6

Shares in issue 2,079.7m

Free float 93%

Code PRR

Primary exchange ASX

Secondary exchange NASDAQ

Share price performance



% 1m 3m 12m

Abs (5.9) (13.5) (7.3)

Rel (local) (5.6) (15.9) (34.7)

52-week high/low A\$0.05 A\$0.03

Business description

Prima BioMed is an ASX-listed biotechnology company focused on cancer immunotherapy. Its pipeline is based on three products using a LAG-3 immune control system: IMP321 for cancer chemo-immunotherapy and partnered products IMP731 (GSK) and IMP701 (Novartis).

Next events

AIPAC immune monitoring and activity data from run-in phase Mid-2017

Further TACTI-mel dose escalation safety and activity data 2017

IMP761 preclinical data 2017

Analysts

Dennis Hulme +61 (0)2 9258 1161

Dr Susie Jana +44 (0)20 3077 5700

healthcare@edisongroup.com

[Edison profile page](#)

Prima BioMed is a research client of Edison Investment Research Limited

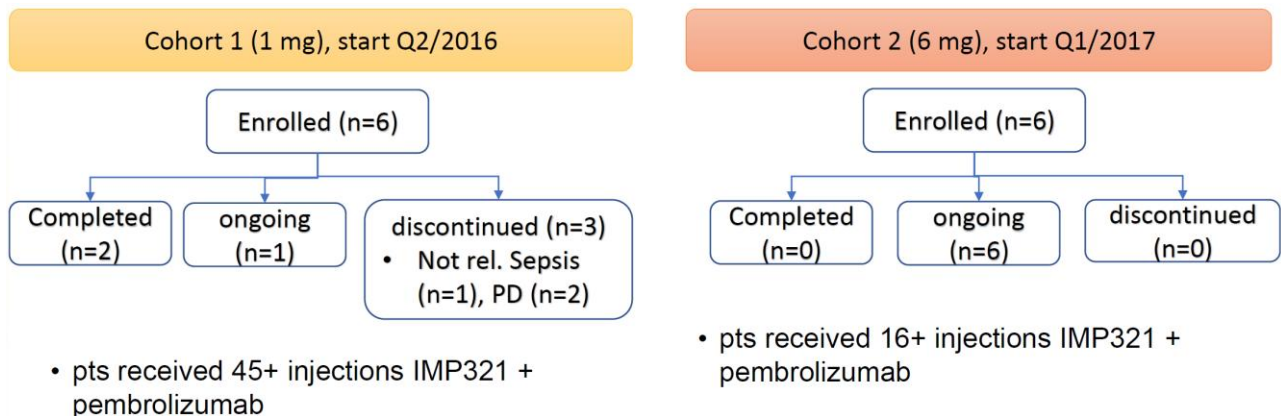
Complete responder in first TACTI-mel cohort

On 16 March Prima's chief medical and scientific officer, Dr Frédéric Triebel, presented an update on the Phase I TACTI-mel trial, including preliminary efficacy data from the first cohort, at the Immune Checkpoint Inhibitors conference in Boston, Massachusetts. This study will test three doses of IMP321 (1, 6 and 30mg/kg) in combination with the anti-PD-1 immune checkpoint inhibitor Keytruda (pembrolizumab, Merck) in 18 patients with advanced melanoma. Recruitment in the first two cohorts is complete, as shown in Exhibit 1.

The trial is investigating IMP321 in subjects who have had a suboptimal response to initial treatment with Keytruda. Subjects are assessed after they have undergone three cycles (nine weeks) of treatment with Keytruda; patients with stable disease or slow progression not requiring urgent intervention are eligible to participate in the trial and receive IMP321, starting with the fifth Keytruda cycle at week 13.

Six patients were enrolled in the first dose cohort (1mg/kg every two weeks), which began in Q216. The second cohort of six patients is fully recruited, and all subjects continue to receive three-weekly injections of Keytruda and fortnightly injections of IMP321 at 6mg/kg. No clinically significant adverse events related to IMP321 or the combination of IMP321 with Keytruda have been observed at either dose level so far. Recruitment in the third and highest (30mg) dose cohort is expected to complete in Q317.

Exhibit 1: TACTI-mel Phase I status and preliminary results



Both dose levels:

→No clinically significant AEs related to IMP321 or the combination of IMP321 and pembrolizumab

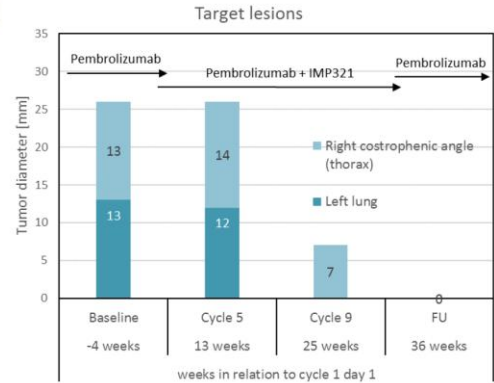
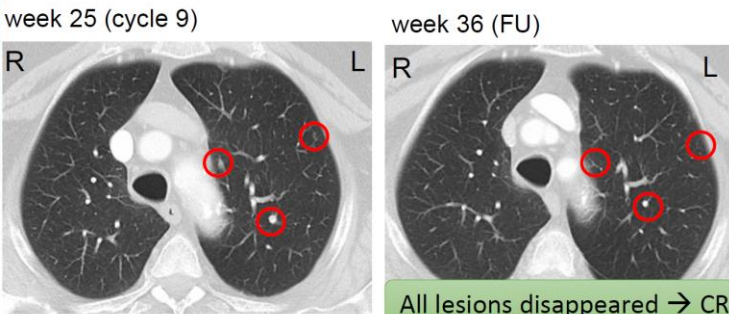
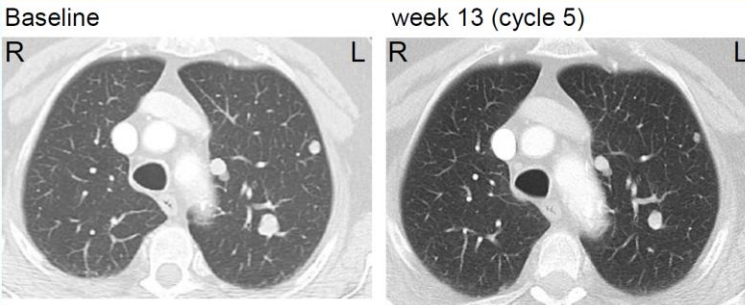
Source: Prima BioMed [presentation](#) at Immune Checkpoint Inhibitors conference, Boston, Massachusetts

One of the six patients receiving the lowest dose of IMP321 experienced a complete response (CR, Exhibit 2). After the completion of four cycles (12 weeks) of Keytruda monotherapy there was no shrinkage in this patient's tumours, but after four cycles of combination therapy with Keytruda and low dose IMP731 the lung metastases had shrunk by 73%; 23 weeks after initiation of IMP321 combination therapy the tumours had disappeared altogether. Of the other five patients, two experienced disease progression (tumour growth), one withdrew due to unrelated sepsis and there is no information about the other two, although they appear to have completed 26 weeks of treatment with IMP321 without disease progression. One should not read too much into a single tumour response, particularly given that the dose of IMP321 was low and delayed responses are a well-recognised feature of therapy with ICI, but it is encouraging that the tumour shrinkage appears

to have coincided with the initiation of combination therapy. Again, while the number of patients is small, the preliminary CR rate of 17% (1/6) compares favourably with CR rates of 2-6% seen in Phase III trials of Keytruda monotherapy in melanoma.

Exhibit 2: TACTI-mel first cohort (1mg/kg IMP321) complete responder and preliminary results

Efficacy



	Baseline -4 weeks	Cycle 5 13 weeks	Cycle 9 25 weeks	FU 36 weeks
Target	26 mm	26 mm (- 0%) SD	7 mm (-73%) PR	0 mm (-100 %) CR
Non-target	present	Non-CR/ non-PD	CR	CR
Overall	N/A	SD	PR	CR

According to RECIST 1.1


Source: Prima BioMed [presentation](#) at Immune Checkpoint Inhibitors conference, Boston, Massachusetts

Exhibit 3: Financial summary

	A\$'000s	2014	2015	2016	2017e	2018e
Year end 30 June		IFRS	IFRS	IFRS	IFRS	IFRS
PROFIT & LOSS						
Revenue		2,020	1,336	1,949	1,253	10,564
R&D expenses		0	(8,952)	(7,060)	(7,271)	(7,489)
SG&A expenses		2,020	(5,723)	(6,983)	(7,122)	(7,336)
EBITDA		(14,003)	(13,345)	(12,093)	(13,141)	(4,262)
Operating Profit (before GW and except.)		(14,395)	(13,671)	(12,275)	(13,144)	(4,269)
Intangible Amortisation		(54)	(1,015)	(1,993)	(1,877)	(1,708)
Exceptionals		0	(18,338)	(47,468)	0	0
Operating Profit		(14,450)	(33,024)	(61,736)	(15,021)	(5,976)
Other		407	538	(1,716)	0	0
Net Interest		713	192	256	418	244
Profit Before Tax (norm)		(13,275)	(12,940)	(13,735)	(12,727)	(4,025)
Profit Before Tax (IFRS)		(13,330)	(32,294)	(63,196)	(14,603)	(5,732)
Tax		(14)	142	1,181	0	0
Profit After Tax (norm)		(13,289)	(12,798)	(12,554)	(12,727)	(4,025)
Profit After Tax (IFRS)		(13,343)	(32,152)	(62,015)	(14,603)	(5,732)
Average Number of Shares Outstanding (m)		1,220.1	1,490.1	2,236.3	2,061.6	2,073.1
EPS - normalised (c)		(1.1)	(0.9)	(0.6)	(0.6)	(0.2)
EPS - IFRS (c)		(1.1)	(2.2)	(2.8)	(0.7)	(0.3)
Dividend per share (c)		0.0	0.0	0.0	0.0	0.0
Gross Margin (%)		N/A	N/A	N/A	N/A	N/A
EBITDA Margin (%)		N/A	N/A	N/A	N/A	N/A
Operating Margin (before GW and except.) (%)		N/A	N/A	N/A	N/A	N/A
BALANCE SHEET						
Fixed Assets		694	22,960	20,883	19,031	17,347
Intangible Assets		117	22,662	20,852	18,975	17,267
Tangible Assets		577	298	32	56	79
Other		0	0	0	0	0
Current Assets		24,684	8,023	21,671	8,919	4,871
Stocks		0	0	0	0	0
Debtors		196	315	168	168	168
Cash		23,200	6,760	20,880	8,128	4,080
Other		1,287	948	623	623	623
Current Liabilities		(2,771)	(4,380)	(1,472)	(1,472)	(1,472)
Creditors		(2,669)	(2,791)	(1,444)	(1,444)	(1,444)
Short term borrowings		0	(1,508)	(0)	(0)	(0)
Short term leases		0	0	0	0	0
Other		(102)	(80)	(28)	(28)	(28)
Long Term Liabilities		(15)	(1,914)	(5,765)	(5,765)	(5,765)
Long term borrowings incl. conv. note		0	0	(5,027)	(5,027)	(5,027)
Long term leases		0	0	0	0	0
Other long term liabilities		(15)	(1,914)	(737)	(737)	(737)
Net Assets		22,592	24,690	35,317	20,714	14,981
CASH FLOW						
Operating Cash Flow		(14,908)	(7,785)	(11,594)	(13,141)	(4,262)
Net Interest		705	0	284	418	244
Tax		(24)	(2)	0	0	0
Capex		(104)	(49)	(27)	(28)	(30)
Acquisitions/disposals		0	(20,913)	130	0	0
Financing		6,845	7,745	27,229	0	0
Dividends		0	0	0	0	0
Other		(158)	(164)	0	0	0
Net Cash Flow		(7,643)	(21,168)	16,022	(12,752)	(4,048)
Opening net debt/(cash)		(30,023)	(23,200)	(5,251)	(15,852)	(3,100)
HP finance leases initiated		0	0	0	0	0
Other		820	3,220	(5,421)	0	0
Closing net debt/(cash)		(23,200)	(5,251)	(15,852)	(3,100)	948

Source: Company accounts, Edison Investment Research

Edison is an investment research and advisory company, with offices in North America, Europe, the Middle East and AsiaPac. The heart of Edison is our world-renowned equity research platform and deep multi-sector expertise. At Edison Investment Research, our research is widely read by international investors, advisers and stakeholders. Edison Advisors leverages our core research platform to provide differentiated services including investor relations and strategic consulting. Edison is authorised and regulated by the [Financial Conduct Authority](#). Edison Investment Research (NZ) Limited (Edison NZ) is the New Zealand subsidiary of Edison. Edison NZ is registered on the New Zealand Financial Service Providers Register (FSP number 247505) and is registered to provide wholesale and/or generic financial adviser services only. Edison Investment Research Inc (Edison US) is the US subsidiary of Edison and is regulated by the Securities and Exchange Commission. Edison Investment Research Limited (Edison Aus) [46085869] is the Australian subsidiary of Edison and is not regulated by the Australian Securities and Investment Commission. Edison Germany is a branch entity of Edison Investment Research Limited [4794244]. www.edisongroup.com

DISCLAIMER

Copyright 2017 Edison Investment Research Limited. All rights reserved. This report has been commissioned by Prima BioMed and prepared and issued by Edison for publication globally. All information used in the publication of this report has been compiled from publicly available sources that are believed to be reliable, however we do not guarantee the accuracy or completeness of this report. Opinions contained in this report represent those of the research department of Edison at the time of publication. The securities described in the Investment Research may not be eligible for sale in all jurisdictions or to certain categories of investors. This research is issued in Australia by Edison Aus and any access to it, is intended only for "wholesale clients" within the meaning of the Australian Corporations Act. The Investment Research is distributed in the United States by Edison US to major US institutional investors only. Edison US is registered as an investment adviser with the Securities and Exchange Commission. Edison US relies upon the "publishers' exclusion" from the definition of investment adviser under Section 202(a)(11) of the Investment Advisers Act of 1940 and corresponding state securities laws. As such, Edison does not offer or provide personalised advice. We publish information about companies in which we believe our readers may be interested and this information reflects our sincere opinions. The information that we provide or that is derived from our website is not intended to be, and should not be construed in any manner whatsoever as, personalised advice. Also, our website and the information provided by us should not be construed by any subscriber or prospective subscriber as Edison's solicitation to effect, or attempt to effect, any transaction in a security. The research in this document is intended for New Zealand resident professional financial advisers or brokers (for use in their roles as financial advisers or brokers) and habitual investors who are "wholesale clients" for the purpose of the Financial Advisers Act 2008 (FAA) (as described in sections 5(c) (1)(a), (b) and (c) of the FAA). This is not a solicitation or inducement to buy, sell, subscribe, or underwrite any securities mentioned or in the topic of this document. This document is provided for information purposes only and should not be construed as an offer or solicitation for investment in any securities mentioned or in the topic of this document. A marketing communication under FCA Rules, this document has not been prepared in accordance with the legal requirements designed to promote the independence of investment research and is not subject to any prohibition on dealing ahead of the dissemination of investment research. Edison has a restrictive policy relating to personal dealing. Edison Group does not conduct any investment business and, accordingly, does not itself hold any positions in the securities mentioned in this report. However, the respective directors, officers, employees and contractors of Edison may have a position in any or related securities mentioned in this report. Edison or its affiliates may perform services or solicit business from any of the companies mentioned in this report. The value of securities mentioned in this report can fall as well as rise and are subject to large and sudden swings. In addition it may be difficult or not possible to buy, sell or obtain accurate information about the value of securities mentioned in this report. Past performance is not necessarily a guide to future performance. Forward-looking information or statements in this report contain information that is based on assumptions, forecasts of future results, estimates of amounts not yet determinable, and therefore involve known and unknown risks, uncertainties and other factors which may cause the actual results, performance or achievements of their subject matter to be materially different from current expectations. For the purpose of the FAA, the content of this report is of a general nature, is intended as a source of general information only and is not intended to constitute a recommendation or opinion in relation to acquiring or disposing (including refraining from acquiring or disposing) of securities. The distribution of this document is not a "personalised service" and, to the extent that it contains any financial advice, is intended only as a "class service" provided by Edison within the meaning of the FAA (ie without taking into account the particular financial situation or goals of any person). As such, it should not be relied upon in making an investment decision. To the maximum extent permitted by law, Edison, its affiliates and contractors, and their respective directors, officers and employees will not be liable for any loss or damage arising as a result of reliance being placed on any of the information contained in this report and do not guarantee the returns on investments in the products discussed in this publication. FTSE International Limited ("FTSE") © FTSE 2017. "FTSE®" is a trade mark of the London Stock Exchange Group companies and is used by FTSE International Limited under license. All rights in the FTSE indices and/or FTSE ratings vest in FTSE and/or its licensors. Neither FTSE nor its licensors accept any liability for any errors or omissions in the FTSE indices and/or FTSE ratings or underlying data. No further distribution of FTSE data is permitted without FTSE's express written consent.